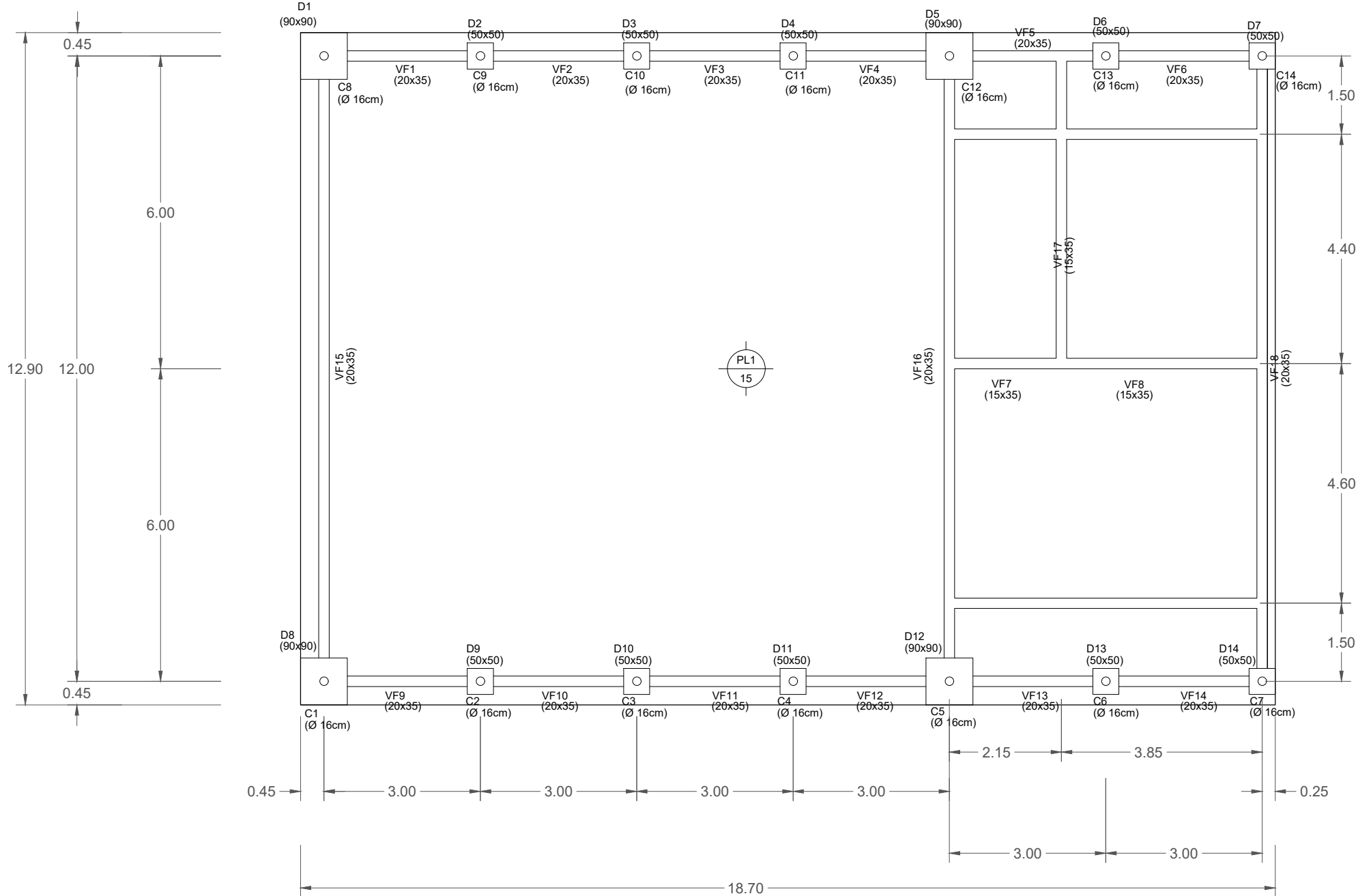
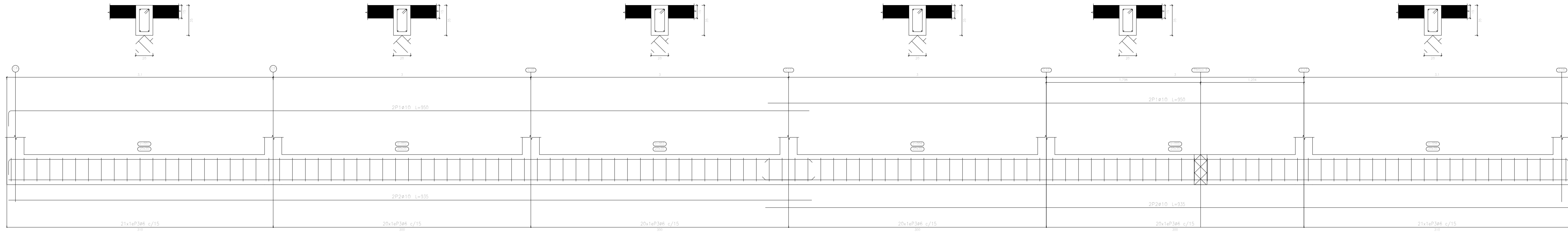


PLANTA DE FUNDACION

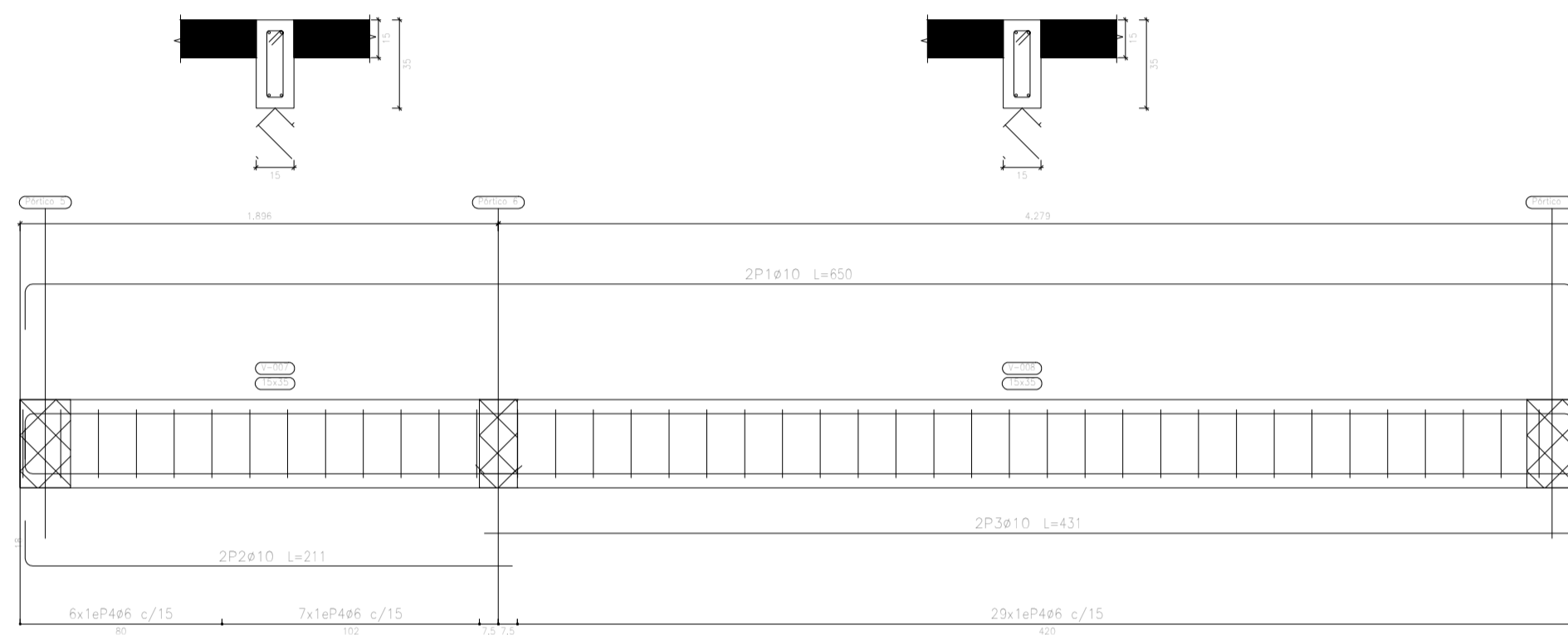
D=DADO H° (e=35cm); C=COLUMNA (h=2,65m); VF=VIGA DE FUNDACIÓN (20cmx35cm); PL=PLATEA (e=15cm)



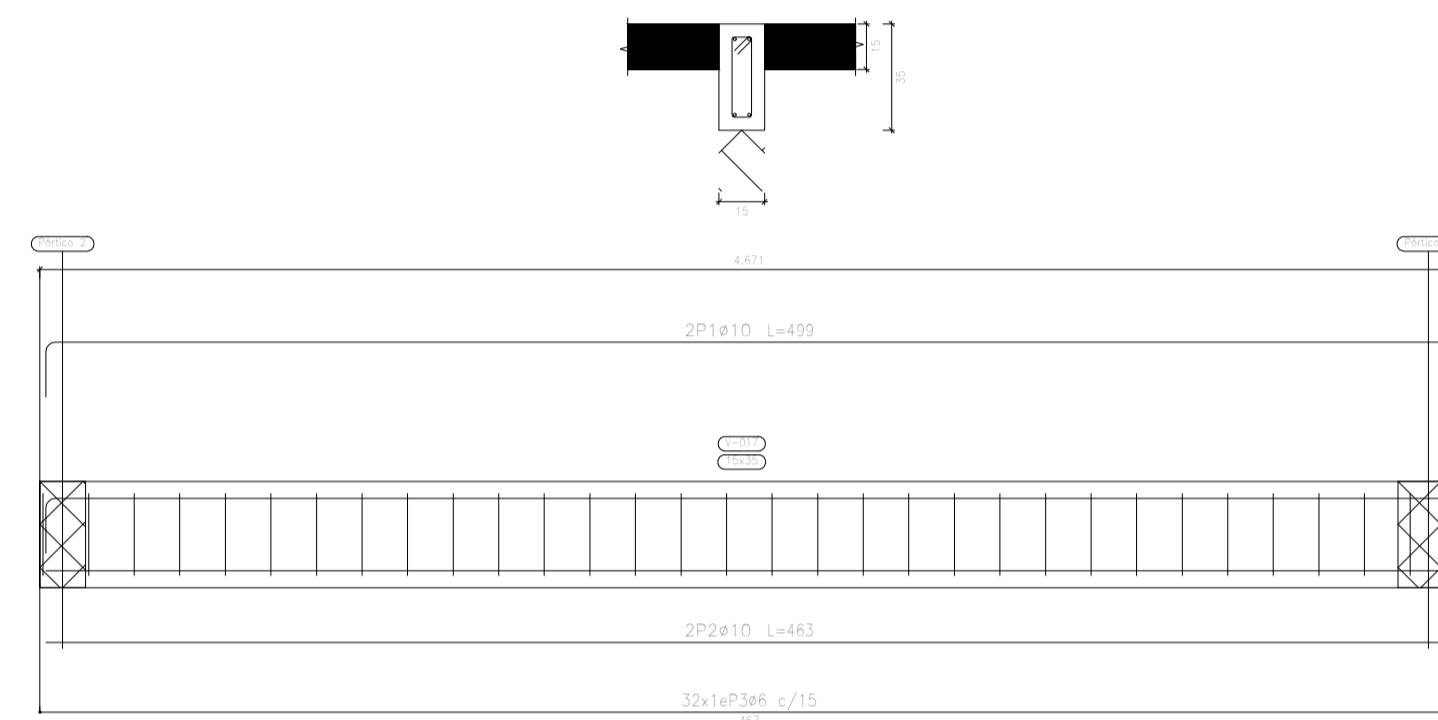
PORTICO 1



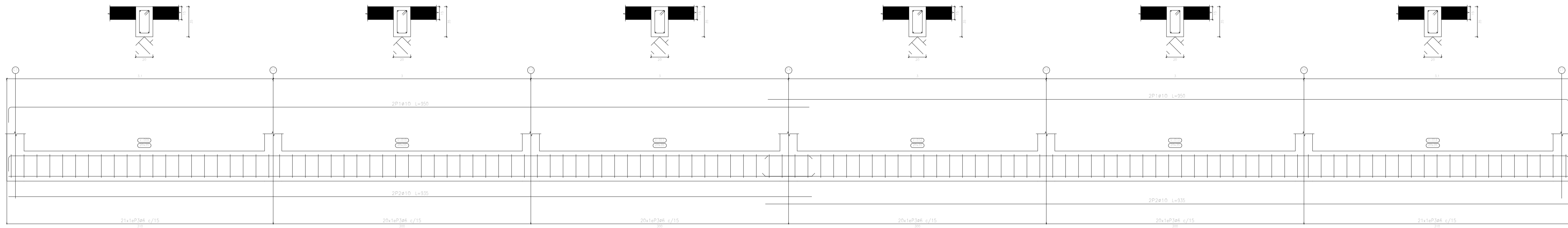
PORTICO 2



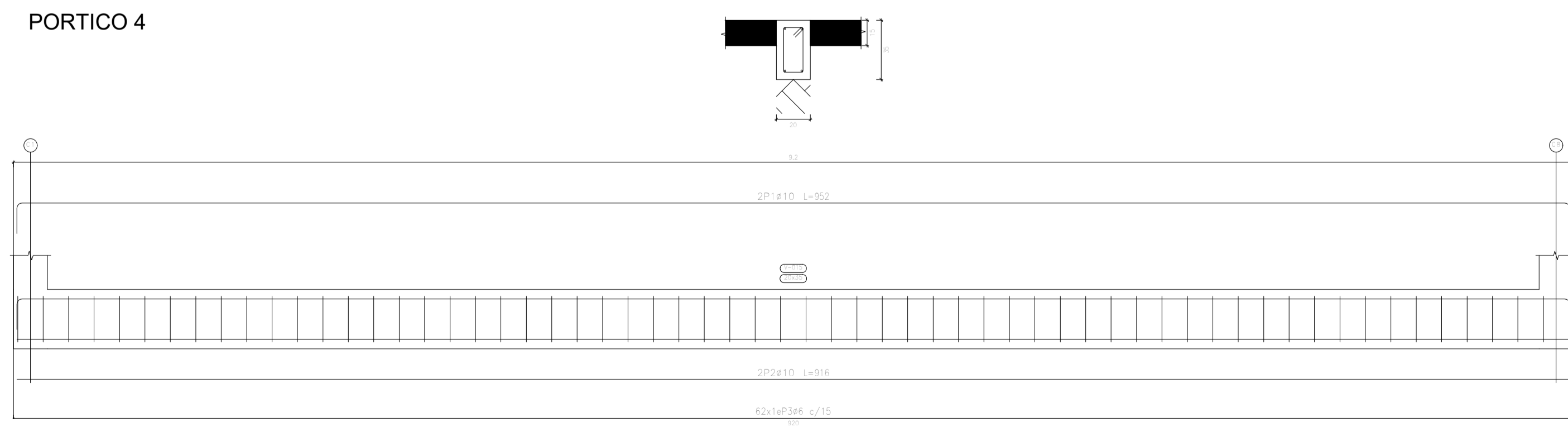
PORTICO 6



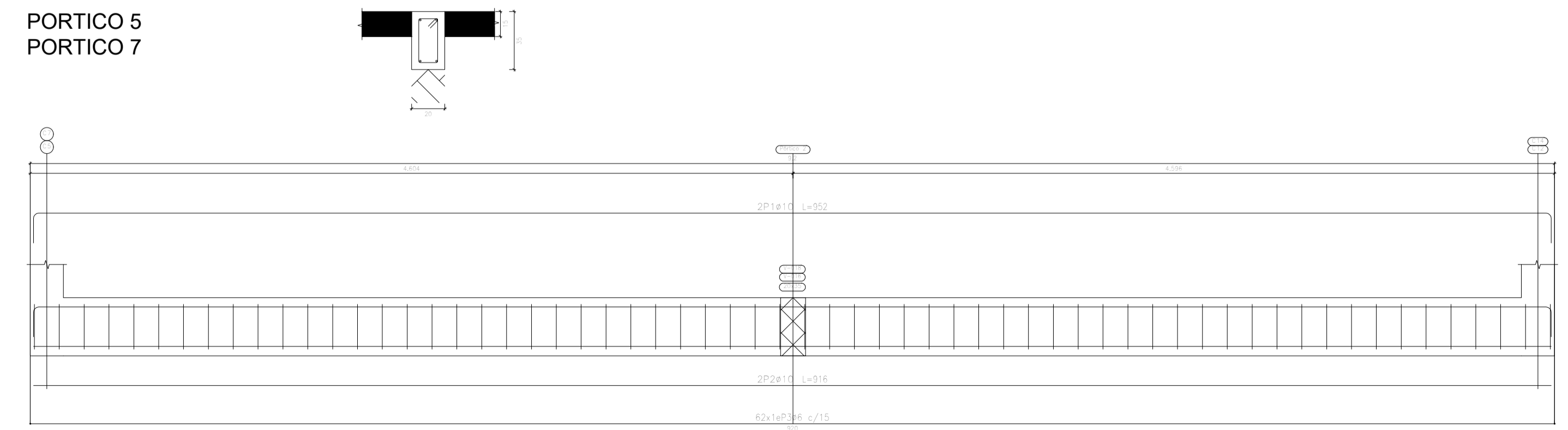
PORTICO 3

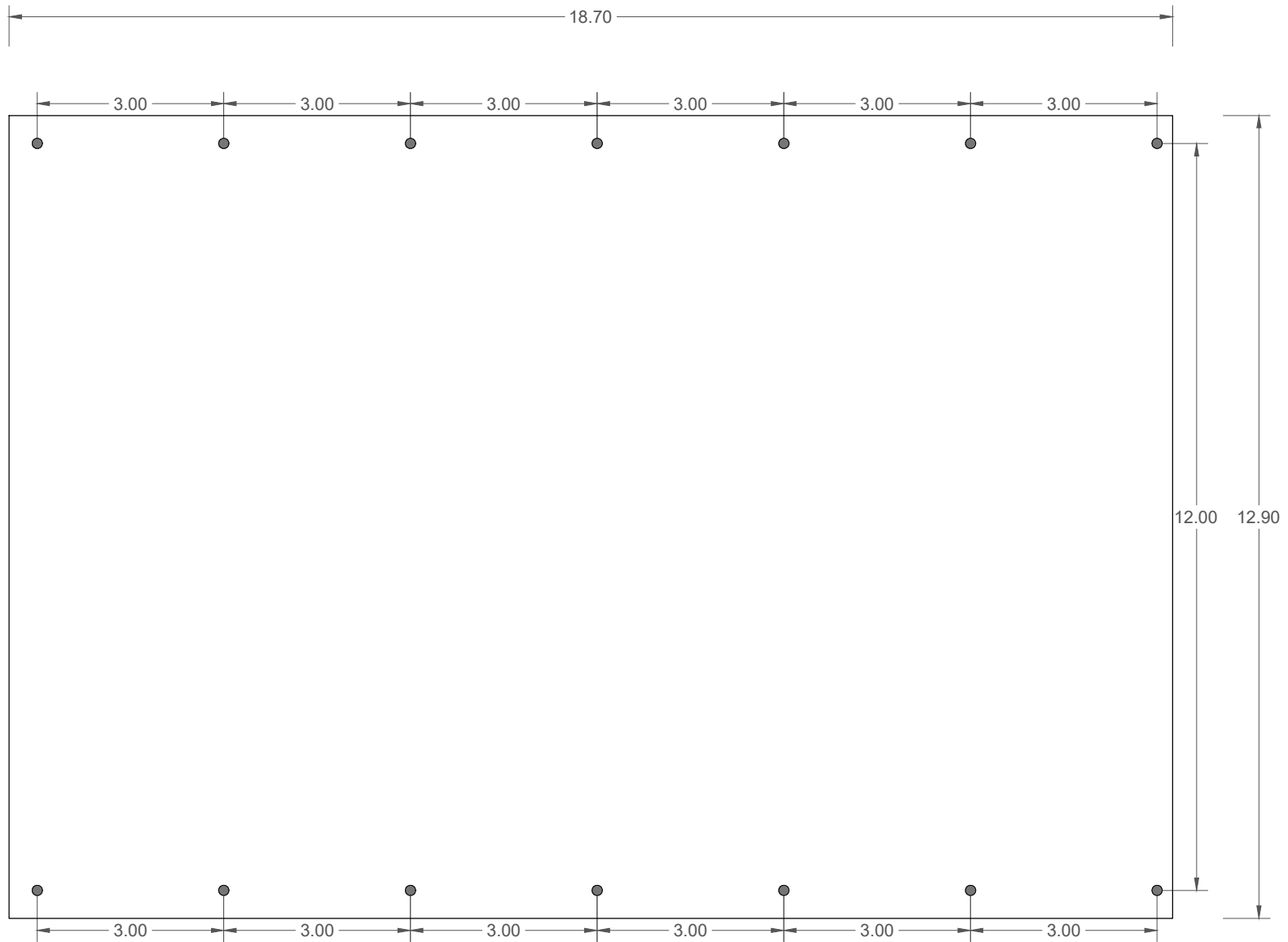


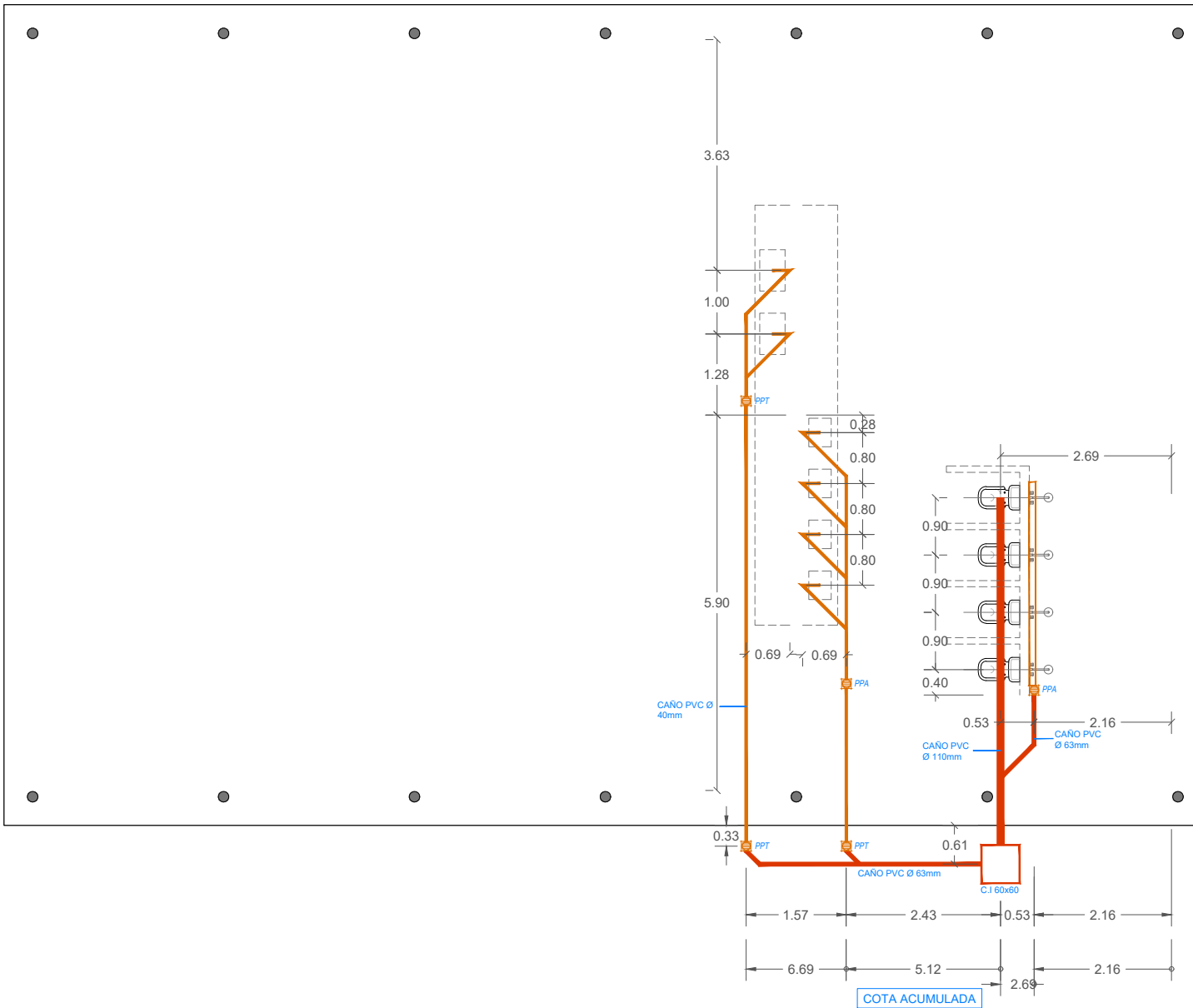
PORTICO 4

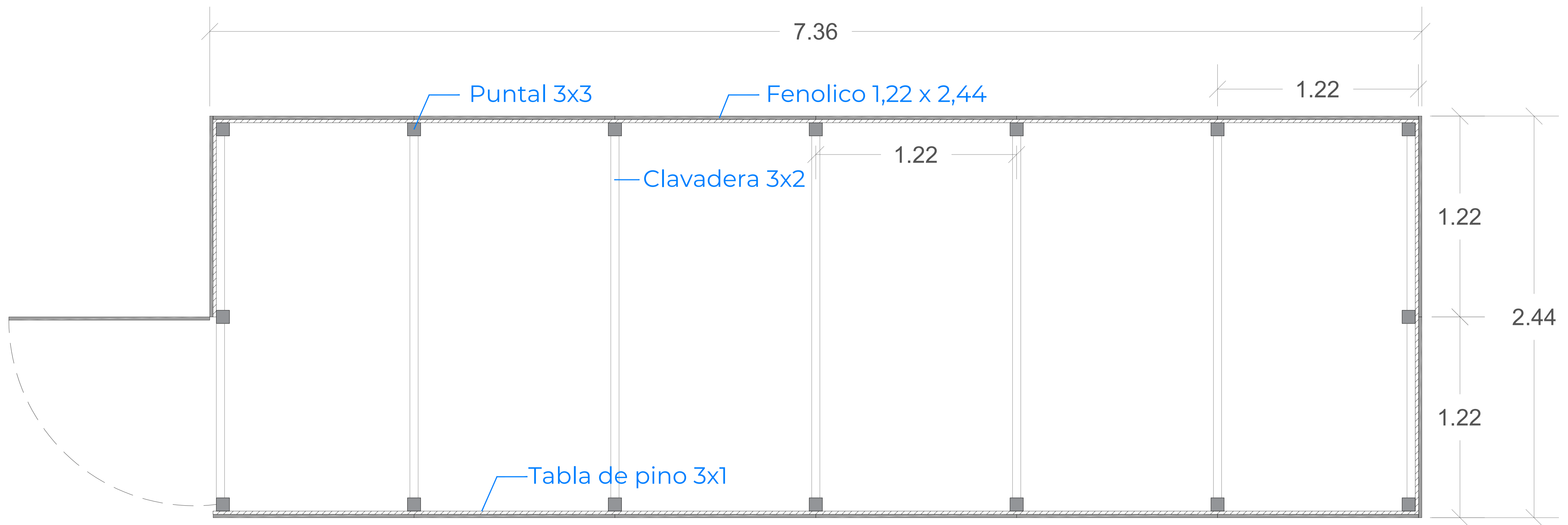


PORTICO 5
PORTICO 7

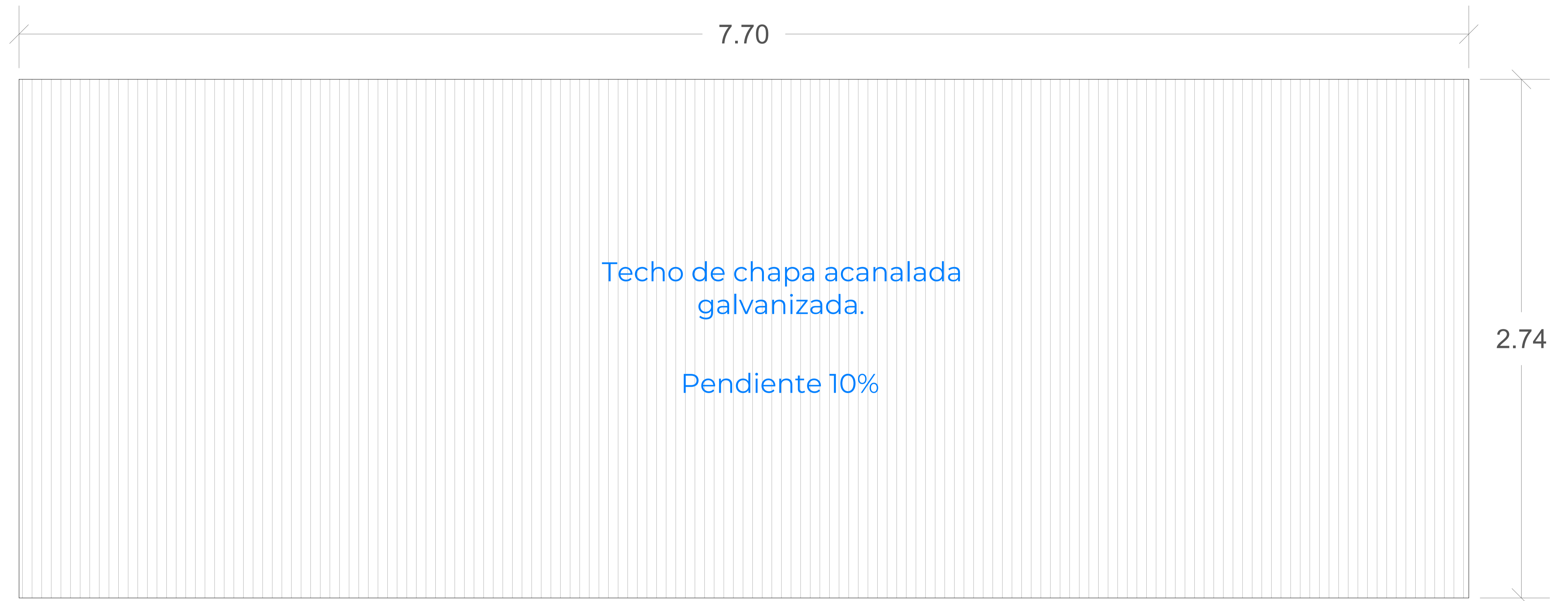




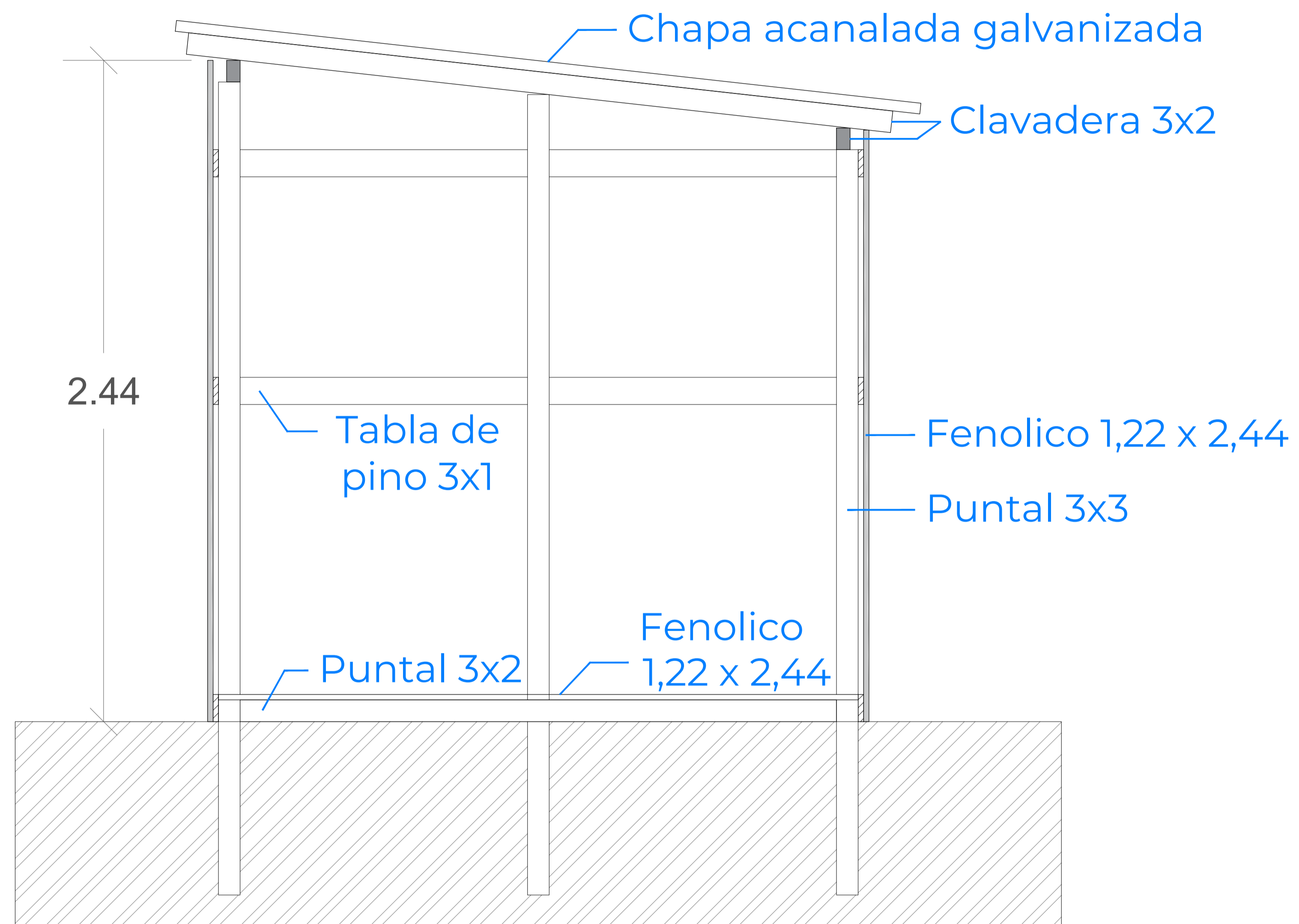




PLANTA



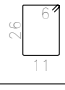



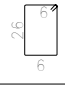


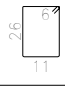


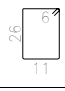


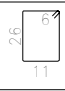


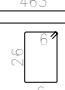


PLANTA DE TECHOS



CORTE

Hormigon: H-20
 Acero en barras: ADN 420
 Acero en estribos: ADN 420

Elemento	Pos.	Diám.	No.	Esquema (cm)	Long. (cm)	Total (cm)	ADN 420 (kg)
Portico 1	1	∅10	4		950	3800	23.4
	2	∅10	4		935	3740	23.0
	3	∅6	122		88	10736	23.9
	Total+10%:						77.3
Portico 2	1	∅10	2		650	1300	8.0
	2	∅10	2		211	422	2.6
	3	∅10	2		431	862	5.3
	4	∅6	42		78	3276	7.3
Total+10%:						25.5	
Portico 3	1	∅10	4		950	3800	23.4
	2	∅10	4		935	3740	23.0
	3	∅6	122		88	10736	23.9
	Total+10%:						77.3
Portico 4	1	∅10	2		952	1904	11.7
	2	∅10	2		916	1832	11.3
	3	∅6	62		88	5456	12.1
	Total+10%:						38.6
Portico 5 y 7	1	∅10	2		952	1904	11.7
	2	∅10	2		916	1832	11.3
	3	∅6	62		88	5456	12.1
	Total+10%: (x2):						38.6 77.2
Portico 6	1	∅10	2		499	998	6.1
	2	∅10	2		463	926	5.7
	3	∅6	32		78	2496	5.5
	Total+10%:						19.0
						∅6:	106.5
						∅10:	208.4
						Total:	314.9